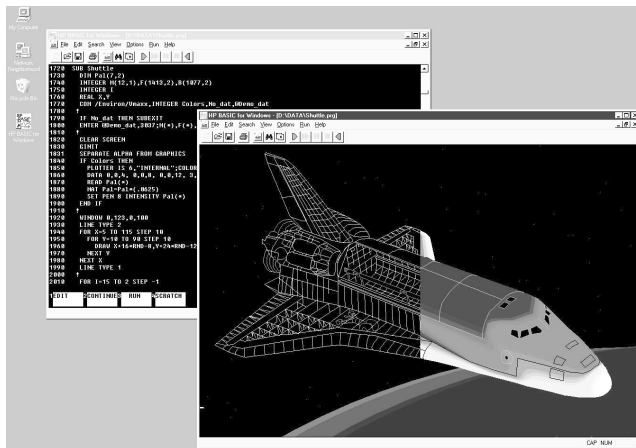


HP BASIC for Windows HP E2060C

Technical Specifications

- Includes new Windows Graphical User Interface
- An easy-to-learn/use textual programming language
- Features powerful graphic commands to display data
- Helps you create quality user interfaces and includes HP BASIC Plus
- Windows 98 compatible
- Includes new SERIAL32 driver support.



HP E2060C

Description

HP E2060C HP BASIC for Windows development software brings the power and ease-of-use of the popular HP BASIC to the PC and the Microsoft Windows operating system. It's the solution you need for today's test challenges—with the long-term commitment you need to carry you beyond tomorrow.

HP E2060C provides two versions—Legacy and Enterprise—on a single CD. Legacy provides an upgrade to the traditional Rocky Mountain BASIC programming environment and supports HP BASIC Plus. The upgrade includes: additional support of over four million program lines, improved conformance of the MAT statement, and the addition of Universal Naming Convention (UNC) support. The Legacy version is supported under Windows 3.1, Windows 95, Windows 98 and Windows NT 4.0.

The Enterprise version is implemented in 32-bit code to optimize when running in Windows 95, Windows 98 or Windows NT. It includes a new graphical user interface (GUI) with pull-down menus, dialog boxes, toolbars, and scroll bars for a more integrated Windows environment.

Refer to the HP Website for instrument driver availability and downloading instructions, as well as for recent product updates, if applicable.

HP E2060C HP BASIC for Windows is a port of the Rocky Mountain BASIC to the PC and the Microsoft Windows operating system. HP E2060C provides two versions—Legacy and Enterprise—on a single CD.

The HP BASIC for Windows Legacy version provides an upgrade to the traditional Rocky Mountain BASIC programming environment and supports HP BASIC Plus. The upgrade includes: additional support of over four million program lines, improved conformance of the MAT statement, and the addition of Universal Naming Convention (UNC) support. The Legacy version is supported under Windows 3.1, Windows 95, Windows 98 and Windows NT 4.0.

The HP BASIC for Windows Enterprise version, implemented in 32-bit code for Windows 95, Windows 98 or Windows NT, includes a new graphical user interface (GUI) with pull-down menus, dialog boxes, toolbars, and scroll bars for a more integrated Windows environment. The Enterprise version supports SEPARATE ALPHA FROM GRAPHICS, inbound serial TRANSFER and serial interrupts.

Service and Support

A full range of services are available for HP BASIC and its complementary products. A volume discount license (HP E2066C) is available and contains a license-only with an additional serial number. You can purchase Technical Assistance, HP E2060C +H00, which puts you in touch with our expert test & measurement engineers. You can also purchase an automatic upgrade distribution contract, HP E2060C +UAF, which ensures that the most recent product will be delivered to you even before the upgrade is released to new customers. If you already own HP BASIC for Windows, you can receive update discounts when you order the revision update option, HP E2060C Opt. AGE. Revision updates allow you to purchase the latest revision at your convenience.

HP BASIC Plus

HP BASIC Plus is available only in the Legacy version of HP BASIC for Windows. HP BASIC Plus adds two important features to HP BASIC: user interface graphics commands and online help enabling compatibility with Workstation HP BASIC Plus. HP BASIC Plus lets you easily create bright, crisp user interface graphics. All of the graphics provide a wide range of settings that you can easily customize to meet your application requirements. With just a few lines of code you can create a variety of graphics objects, including objects as complicated as STRIPCHART, METER, XY GRAPH, and RADIOBUTTON. In addition, HP BASIC Plus provides online help for all the HP BASIC and HP BASIC Plus keywords. You can access information directly by keyword, or by using the keyword dictionary. You can even copy examples from online help directly into your HP BASIC program.

Porting From Other HP BASIC Platforms

You can move 98% of your programs developed on other HP BASIC platforms to HP BASIC for Windows. Using the SAVE command, you can easily move to HP BASIC for Windows, protecting your investment in software development. HP BASIC for Windows includes utilities to help you move your program and data files from LIF-formatted floppy disks.

Improvements in Porting

Now, support of serial TRANSFER makes it easier for you to reuse your existing workstation applications or develop a program on your workstation and port it to your PC.

For more information on porting, request the brochure *HP BASIC for Windows Porting Considerations*, HP pub. no. 5964-6019E.

Accessory Products

HP BASIC for Windows CSUB (Compiled Subroutine) Utility—HP E2061A

The CSUB tool kit allows you to build compiled subroutines for HP BASIC for Windows applications. A compiled subroutine runs directly on the processor hardware and has access to all its power functionality. Many functions can be performed that would otherwise be impossible with HP BASIC programs. Once built, a CSUB may be loaded into an HP BASIC for Windows program using the LOADSUB command, or it can be deleted with the DELSUB command. CSUBs may be stored in a PROG file and loaded along with other subprograms.

Tools Required for Compiled Subroutines

You will need the Microsoft C++ 32-bit compiler and Linker to develop CSUBs for HP BASIC for Windows. Visual C++ versions 2.x run under MS-DOS or Windows unless you purchase the PharLap Front Runner product (not available from HP) and install the Win-Host environment for the Front Runner package.

HP BASIC for Windows Numeric Compiler—HP E2062A

The numeric compiler is installed as a simple program under Windows and is easy to use. It allows you to optimize the performance of SUBs in your HP BASIC programs. The numeric compiler does not generate standalone executable programs. It simply takes SUBs and turns them into CSUBs that operate within the HP BASIC for Windows interpreter. These are distinct from the CSUBs you can produce with the HP E2061A CSUB toolkit that are external DLLs and are not executed from within the HP BASIC for Windows environment. You can only compile SUBs; user-defined functions cannot be compiled.

Complementary Products

Rocky Mountain BASIC (RMB/UX)

RMB/UX is available on the HP-UX S/700 platform. For more information, visit the website at URL www.tmo.hp.com/tmo/datasheets/English/HPE2045C.html.

SRM

HP BASIC for Windows is now a full SRM/UX client. This allows an HP 200/300 system with HP BASIC/WS that was connected to an SRM/UX system to be replaced by a PC and HP BASIC for Windows. SRM/UX networking now allows file sharing between HP BASIC for Windows on a PC and HP computers with HP BASIC/WS or workstations with HP BASIC/UX S/300 or HP BASIC/UX S/700.

Product Specifications

HP BASIC for Windows Enterprise Version

PC CPU requirements:	486 minimum (Pentium or higher recommended)
PC software requirements:	Windows 95, Windows 98, or Windows NT 4.0
PC memory requirements:	5 MB free hard drive space, 16 MB RAM (32 MB recommended)

Note: CD-ROM drive or access to CD-ROM over a network is required.

HP BASIC for Windows Legacy Version

PC CPU requirements:	386 or higher
PC software requirements:	Windows 3.1*, Windows 95, Windows 98 or Windows NT 4.0 (*Windows 3.1 requires Win32s, which is included)
PC memory requirements:	5 MB free hard drive space, 4 MB RAM (8 MB recommended)

I/O Cards Supported

GPIB (IEEE-488):	HP 82341C, HP 82341D, HP 82350A, TransEra GPIB-900, National Instruments PC2, PC2A, PC3, AT-GPIB, and MC-GPIB, IOTech GP488, GP488A, Personal 488, Personal 488/2, and Power 488.
Serial:	Windows-compatible serial interfaces
GPIO:	HP E2075A General Purpose I/O card TransEra HM600 GPIO card
SRM:	TAMS E2085G

Ordering Information

Description	Product No.
HP BASIC for Windows w/HP BASIC Plus (includes both the Legacy and Enterprise versions)	HP E2060C
Revision Upgrade	HP E2060C AGE
HP BASIC Response Center Support	HP E2060C+H00
HP BASIC SW Updates & Licenses	HP E2060C+UAF
HP BASIC for Windows CSUB Utility	HP E2061A
HP BASIC for Windows Numeric Compiler	HP E2062A
HP BASIC for Windows (volume product)	HP E2066C
Revision Upgrade	HP E2066C AGE
HP BASIC Response Center Support	HP E2066C+H00
HP BASIC SW Updates & Licenses	HP E2066C+UAF

Related Literature

1998 Test System and VXI Products Data Book,
HP Pub. No. 5966-2812E

1999 Test System and VXI Products Catalog,
HP Pub. No. 5968-3698

Warranty

Standard Hewlett-Packard VXIbus hardware products are warranted against defects in materials and workmanship for a period of three years unless otherwise noted. HP software and firmware products that are designated by HP for use with a hardware product, when properly installed on that hardware product, are warranted not to fail to execute their programming instructions due to defects in materials and workmanship.

For a complete and detailed warranty statement please see the *HP Test System and VXI Products Data Book* or visit the HP Website at <http://www.hp.com/go/vxi>.

Website Directory

HP VXI Product Information
<http://www.hp.com/go/vxi>

HP VXI Channel Partners
<http://www.hp.com/go/vxichanpart>

HP VEE Application Website
<http://www.hp.com/go/hpvee>

Data Acquisition and Control Website
http://www.hp.com/go/data_acq

HP Instrument Driver Downloads
http://www.hp.com/go/inst_drivers

Electronics Manufacturing Test Solutions
<http://www.hp.com/go/manufacturing>

For more information about Hewlett-Packard test & measurement products, applications, services, and for a current sales office listing, visit our website, <http://www.hp.com/go/tmdir>. You can also contact one of the following centers and ask for a test & measurement sales representative.

United States:

Hewlett-Packard Company
Test and Measurement Call Center
P.O. Box 4026
Englewood, CO 80155-4026
1 800 452 4844

Canada:

Hewlett-Packard Canada Ltd.
5150 Spectrum Way
Mississauga, Ontario L4W 5G1
(905) 206 4725

Europe:

Hewlett-Packard
European Marketing Centre
P.O. Box 999
1180 AZ Amstelveen
The Netherlands
(31 20) 547 9900

Japan:

Hewlett-Packard Japan Ltd.
Measurement Assistance Center
9-1, Takakura-Cho, Hachioji-Shi,
Tokyo 192, Japan
Tel: (81) 426 56 7832
Fax: (81) 426 56 7840

Latin America:

Hewlett-Packard
Latin American Region Headquarters
5200 Blue Lagoon Drive, 9th Floor
Miami, Florida 33126
U.S.A.
Tel: (305) 267-4245
(305) 267-4220
Fax: (305) 267-4288

Australia/New Zealand:

Hewlett-Packard Australia Ltd.
31-41 Joseph Street
Blackburn, Victoria 3130
Australia
1 800 629 485

Asia Pacific:

Hewlett-Packard Asia Pacific Ltd.
17-21/F Shell Tower, Times Square,
1 Matheson Street, Causeway Bay,
Hong Kong
Tel: (852) 2599 7777
Fax: (852) 2506 9285

Data Subject to Change
Copyright © September 1999
Hewlett-Packard Company
HP Publication No.: 5968-7497E